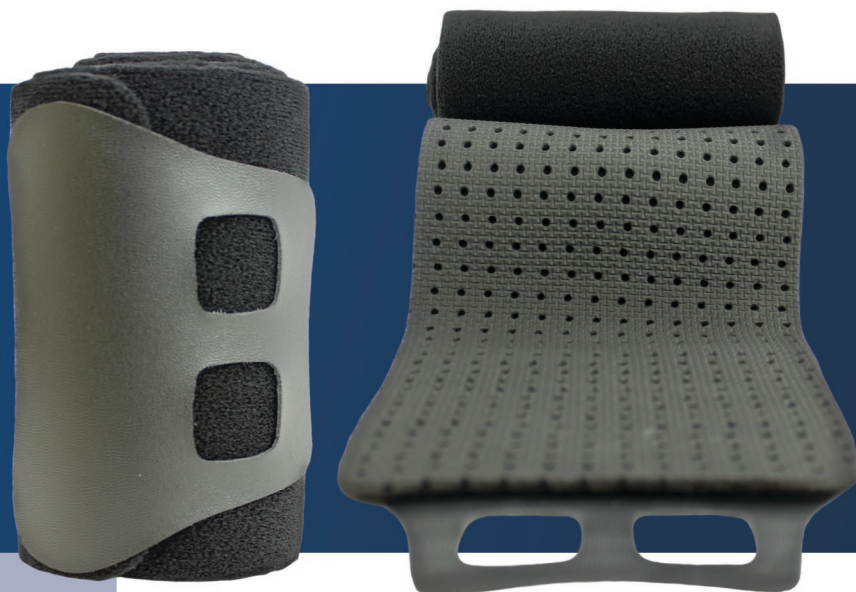




Comfortland Suspension Sleeve

HCPC L2397 Approved



Indications:

When billing for any ROM hinged knee brace (L1832, L1843, L1845), it is possible to bill the Comfortland Suspension Sleeve as an add-on to prevent migration and improve patient comfort (no additional ICD-9 needed).

Contact Us:

Toll Free: (866) 277-3135

Fax: (866) 277-4412

www.comfortlandmed.com



Breathable Construction

The Comfortland Suspension sleeve is made of soft breathable materials, promoting air flow and helping to keep patients comfortable during long periods of wear.



Multiple Options for Use

The Suspension sleeve can be used in 2 different ways; when worn underneath a brace, it helps to prevent skin irritation and provides added soft tissue compression. When worn over a brace, the suspension sleeve helps prevent braces from migrating during periods of heavy activity.



Increased Revenue

With a HCPC code of L2397, the Comfortland Suspension Sleeve is billable with any ROM hinged knee brace, requiring no extra indications and reimbursing an additional \$110.